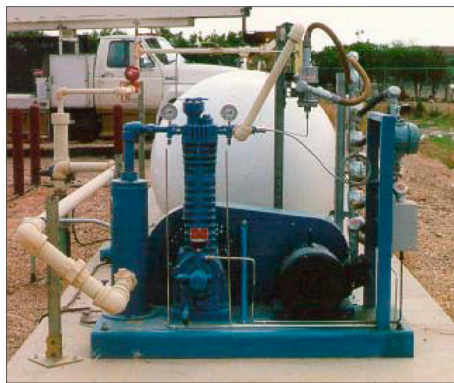


Boost standard utility natural gas service to 150 psi / 10 bar for

HVOF With Natural Gas



Torch Boosters are installed indoors with no special site preparation - just a simple connection to the utility natural gas pipe



Outdoor compressors require lengthy welded high pressure piping runs inside your building and may conflict with local building codes.

TB-HVOF boosts gas pressure at the spray booth with a direct connection to the flow controller- no indoor high pressure piping is needed.

Capacity

With <15 psi utility natural gas service TB-HVOF will operate 1 HVOF gun; with 15 psi natural gas service TB-HVOF will operate 2 HVOF guns

Dimensions & Weight

Width - 50 1/2", Height - 32", Depth - 33"

Width - 128 cm, Height - 81 cm, 83 cm

Weight - 551 lb / 249 kg

Electric Power

TB-HVOF Torch Boosters operate on single phase 208V 60Hz or 230V 50 Hz power; 30 amps.

Gas Supply Line

Use 1 1/2" pipe to supply utility natural gas

Environmental Requirements

Ambient temperature should be between 40-90F

TB-HVOF Torch Boosters replace propane or propylene with high-pressure natural gas from your utility gas line - Get gas flow as high as 500 scfh / 236 lpm !



TB-HVOF makes your HVOF operations more productive by eliminating propylene and propane cylinders and supplying up to 150 psi natural gas right to your spray equipment. Start the Booster and begin spraying immediately - no waiting for tanks to fill.

Natural gas is better than propane/propylene because:

- No reliquification problems at high volumes
- Coating quality characteristics for bond strength, porosity, hardness, etc. are comparable to slightly better than propane
- Natural gas is four times less expensive than propylene and three times less expensive than propane for equal BTUs
- Eliminate unproductive time spent ordering, storing, moving and changing fuel gas cylinders; workplace is safer by eliminating cylinder storage and handling
- Never run out of fuel

Simple installation and operation - TB-HVOF Torch Boosters are compact, can be installed right next to your spray equipment and do not require special site preparation such as ventilation, pipe heaters or a concrete pad. TB-HVOF connects to your spray equipment like any other fuel source.

Save money - save time - get superior performance with high-pressure natural gas!