

You will save money and get top performance when you

Cut Steel With Hi-Pressure Natural Gas



Reduce fuel gas costs by up to 90%, get high-quality cuts and stop wasting time changing cylinders

A G-TEC Natural Gas Pressure Booster System connects to your building's utility natural gas line then boosts the pressure for high performance torch cutting. Simply turn on a G-TEC Torch Booster or use a natural gas cylinder filled with a G-TEC Refueler and you are ready to make clean cuts with quick starts and impressive speed.

With a G-TEC System you can keep the torches you already have and simply change the tip to a natural gas tip.



For savings, performance, convenience and safety, hi-pressure natural gas is a better alternative to acetylene, propane propylene, MAPP or other fuel gases.



High-pressure natural gas makes high-quality cuts in the thickest steel

Cut Fuel Gas Costs By As Much As 90%

- Natural gas is the least expensive fuel gas per 100,000 BTUs
- For equal heat performance natural gas is 10 times cheaper than acetylene, four times cheaper than propylene and half the cost of propane

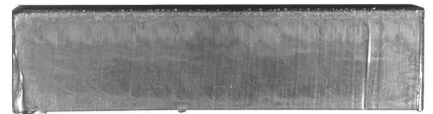
Get High Quality Cuts

- After comparing the cutting performance of natural gas with acetylene the Edison Welding Institute reported:

Natural gas is an excellent fuel...it had less tendency to round the top edge of the cut and produced less slag or dross. Also, the dross that was produced...did not adhere as tightly to the plate and was more easily removed. No difference was found in cutting speed between acetylene and natural gas.



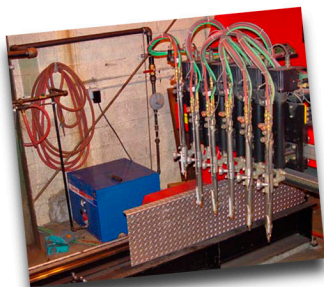
Cuts made with acetylene on 2" plate leave slag and need plenty of grinding



Cuts made with natural gas are cleaner with little slag and require much less grinding



Never run out of fuel gas with a G-TEC Torch Booster



Never Change Fuel Gas Cylinders

- G-TEC Torch Boosters provide a continuous gas supply without cylinders
- Don't waste productive time ordering, storing, moving changing or paying for fuel gas cylinders